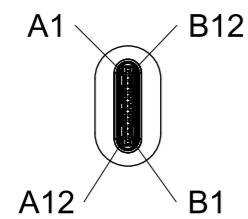
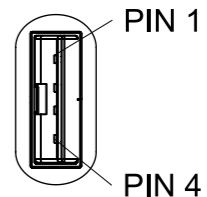
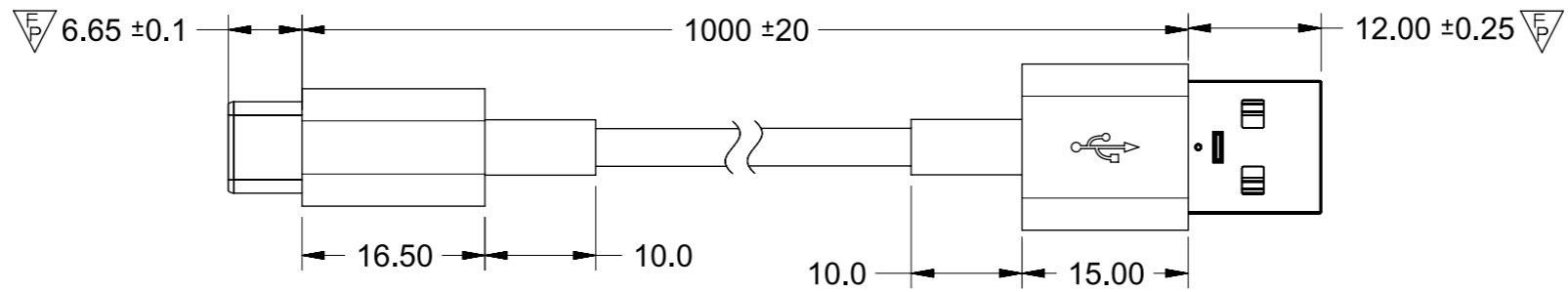


REVISIONS				
EC NO	DATE	REV	DESCRIPTION	CHANGER
NA	2017/12/20	A	INITIAL RELEASE	LUCY
CY18-5434	2018/4/17	B	CHANGE WIRE CHART	LUCY
CY18-5925	2017/07/25	C	CHANGE TYPE C PLUG AND RESIN	LUCY

P1

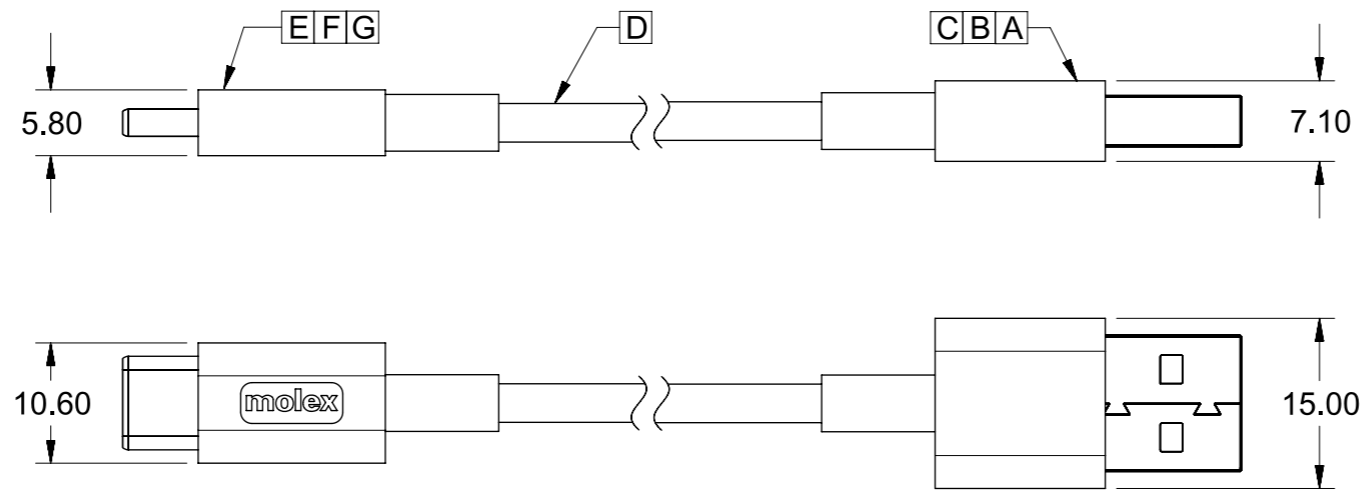


TYPE C

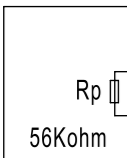


P2

USB 2.0 PLUG



PIN ASSIGNMENTS				
Type C	SIGNAL NAME	WIRE COLOR	USB 2.0	SIGNAL NAME
A1,B1,A12,B12	GND	DRAIN	4	GND
A4,B4,A9,B9	VBUS	RED	1	VBUS
A5	CC	-	-	-
B5	VCONN	-	-	-
A6	Dp1	GREEN	3	D+
A7	Dn1	WHITE	2	D-
SHELL	SHIELD	BRAID	SHELL	SHIELD



G	Right metal shell	1
F	Left metal shell	1
E	Type C plug Au 30u" 22pin+PCBA 2.0	1
D	1Px30AWG+1Cx24AWG,shielded,TPE,White,OD3.40mm,UL21104 (C-A USB2.0 3A 1M)	AR
C	USB2.0, plug, A type,front shell	1
B	USB2.0, plug, A type,back shell	1
A	USB2.0, plug, A type plating 30u"	1
ITEM	DESCRIPTION	QTY.

<b>SYMBOLS</b> DIMENSION UNITS: mm SCALE: 1.5:1 GENERAL TOLERANCES (UNLESS SPECIFIED): ANGULAR TOL ± 3.0° 4 PLACES ± 3 PLACES ± 2 PLACES ± 0.25 1 PLACE ± 0.5 0 PLACES ± DRAFT WHERE APPLICABLE MUST REMAIN WITHIN DIMENSIONS THIRD ANGLE PROJECTION DRAWING: A3-SIZE SERIES: 201241 MATERIAL NUMBER: 687980009 CUSTOMER: GENERAL MARKET SHEET NUMBER: 1 OF 2	THIS DRAWING CONTAINS INFORMATION THAT IS PROPRIETARY TO MOLEX ELECTRONIC TECHNOLOGIES, LLC AND SHOULD NOT BE USED WITHOUT WRITTEN PERMISSION CURRENT REV DESC: EC NO: 601987 DRWN: ZZXIAN 2018/07/25 CHK'D: LLI205 2018/07/26 APPR: LHUIU 2018/07/27 INITIAL REVISION: DRWN: XJGUO01 2016/08/18 APPR: FNIE 2017/12/25			
	USB 2.0 TYPE C TO A WHITE CABLE, L=1M,3A PRODUCT CUSTOMER DRAWING DOCUMENT NUMBER: 2012410147 DOC TYPE: PSD DOC PART: 000 REVISION: C			

6

5

4

3

2

1

NOTE:

1. OVERMOLDING SPECIFICATION:

- 1.1 INNER MOLDING: PE RESIN FOR P1 END
- 1.2 INNER MOLDING: PE RESIN FOR P2 END
- 1.3 SR MOLDING: TPE WHITE RESIN
- 1.4 OUTER MOLDING: TPE WHITE RESIN

2. APPLICATION CONDITION

- 2.1 WORKING TEMPERATURE: -10°--- +50°
- 2.2 STORAGE TEMPERATURE: -20°--- +60°

3. MECHANICAL PERFORMACNE

3.1. 3.1. BENDING TEST:200G, +/-90°, 12~14CYCLES/MINUTES, R=25.4MM,  
HORIZONTAL FOR 500 CYCLES AND VERTICAL FOR 500 CYCLES, NO LESS THAN  
1000 times/cycles\*3 CYCLES=3000 TIMES

3.2. CABLE SHOULD WITHSTAND A PULL FORCE 40N FOR ONE  
MINUTE WITHOUT VISIBLE TERMINATION DAMAGE.PER EIA 364-38 METHOD A

4. ELECTRICAL PERFORMACNE

- 4.1 100% OPEN AND SHORT TEST
- 4.2 HIGH FREQUENCY ELECTRICAL PERFORMANCE MEET USB TYPE-C LEGACY CABLE, C - PLUG A, USB 2.0 REQUIREMENT
- 4.3 CURRENT RATING:3A, VOLTAGE DROP SHALL BE 250mV FOR GND AND 500mV FOR VBUS.

5. THIS PRODUCT MUST MEET EU RoHS

C

D

D

C

C

B

B

A

A

SYMBOLS										THIS DRAWING CONTAINS INFORMATION THAT IS PROPRIETARY TO MOLEX ELECTRONIC TECHNOLOGIES, LLC AND SHOULD NOT BE USED WITHOUT WRITTEN PERMISSION																		
DIMENSION UNITS					SCALE					CURRENT REV DESC:																		
mm					1:1					<p>EC NO: 601987</p> <p>DRWN: ZZXIAN 2018/07/25</p> <p>CHK'D: LL1205 2018/07/26</p> <p>APPR: LHLIU 2018/07/27</p> <p>INITIAL REVISION:</p> <p>DRWN: XJGUO01 2016/08/18</p> <p>APPR: FNIE 2017/12/25</p>																		
GENERAL TOLERANCES (UNLESS SPECIFIED)																												
ANGULAR TOL ± 3.0°																												
4 PLACES ±																												
3 PLACES ±																												
2 PLACES ± 0.25																												
1 PLACE ± 0.5																												
0 PLACES ±																												
DRAFT WHERE APPLICABLE MUST REMAIN WITHIN DIMENSIONS					THIRD ANGLE PROJECTION		DRAWING		SERIES											DOCUMENT NUMBER		DOC TYPE		DOC PART		REVISION		
▽ = 0					A4-SIZE		201241		687980009											GENERAL MARKET		PSD		000		C		



USB 2.0 TYPE C TO A WHITE CABLE, L=1M,3A

PRODUCT CUSTOMER DRAWING

2012410147

DOCUMENT STATUS	P1	RELEASE DATE	2018/07/27	01:17:50
-----------------	----	--------------	------------	----------

6

5

4

3

2

1

FORMAT: master-ds-prod-A4  
REVISION: H  
DATE: 2018/01/18