

4

3

2

1

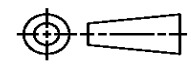
THIS DRAWING IS UNPUBLISHED. RELEASED FOR PUBLICATION  
 © COPYRIGHT ALL RIGHTS RESERVED.

LOC	DIST	REVISIONS			
P	LTR	DESCRIPTION	DATE	DWN	APVD
	E1	ECR-16-009824	28JUL2016	GK	SD

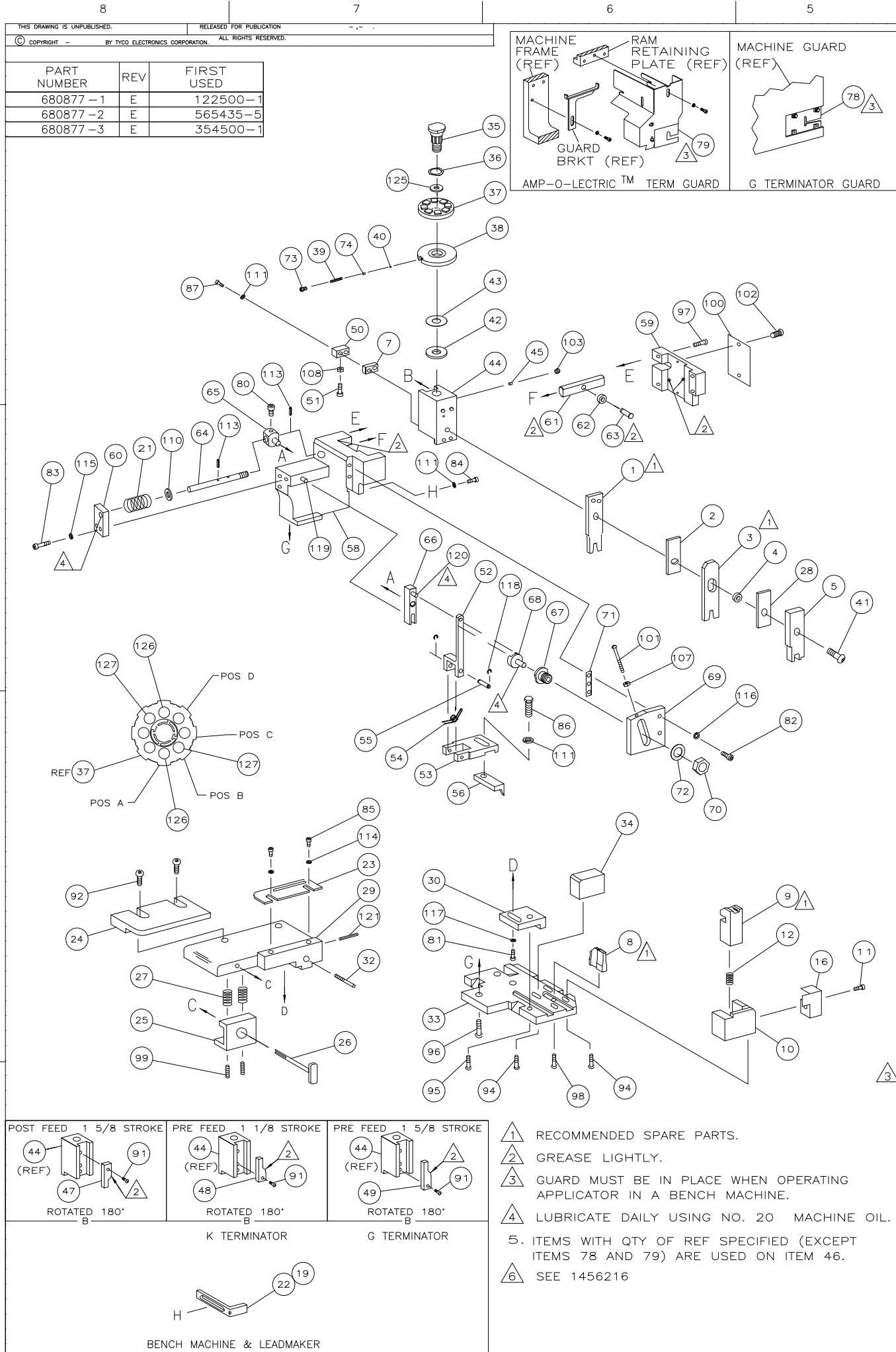
# REPLACED BY OCEAN STYLE APPLICATOR PART NUMBER 2836316-1

FOR REPLACEMENT PARTS FOR APPLICATOR 680877  
 REFER TO ADDITIONAL PAGE(S). SPARE PARTS KIT (IF LISTED)  
 WILL REMAIN AVAILABLE.

THE REPLACEMENT OCEAN STYLE APPLICATOR HAS THE  
 SAME TERMINATOR/PRESS INTERFACE AS APPLICATOR  
 680877

THIS DRAWING IS A CONTROLLED DOCUMENT.		DWN	GOPALAKRISHNA HV		
DIMENSIONS:		CHK	GOPALAKRISHNA HV		
		TOLERANCES UNLESS OTHERWISE SPECIFIED:		APVD	
		0 PLC ± 1 PLC ± 2 PLC ± 3 PLC ± 4 PLC ± ANGLES ±		STOUGH DALE	
MATERIAL		PRODUCT SPEC		NAME	
FINISH		APPLICATION SPEC		SIDE FEED HDM APPLICATOR	
		WEIGHT	SIZE	CAGE CODE	DRAWING NO
			A3		©- 680877
		CUSTOMER DRAWING		SCALE	SHEET 1 OF 2 REV E1





TERMINAL NAME: AUTOMOTIVE SOCKET CONTACT					
AMP P/N	MFG P/N	CRIMP DATA (NON-AMP TERMINAL-MFR SPEC)			
286835	1300263010	PAD LTR	CRIMP HEIGHT		
1437284-9		A	.043 ±.002 [1.09 ±0.05mm]		
		B	.039 ±.002 [1.0 ±0.05mm]		
		C	NOT USED		
		D	NOT USED		
		CRIMP	SIZE	TYPE	RANGE
		WIRE	.070 [1.78mm]	F	18-20
		INSUL	.100 [2.54mm]	F	.076φ MAX
WIRE STRIP LENGTH	TERM APPL SPEC	FEED	APPL INSTRUCTION	SET UP GAGE	LAYOUT
.156-.187	NONE	.312	408-8040	458637-1	L2284

QTY	REF	REF	REF	PART NO	DESCRIPTION	ITEM NO
						129
						128
2	2	2	-	4-354779-5	PIN, WIRE DISC (.3215)B	127
2	2	2	-	3-354779-7	PIN, WIRE DISC (.3175)A	126
1	1	1	-	986950-1	WASHER, FLAT PRECISION	125
1	1	1	-	217238-1	GENERAL INSTRUCTION PACKAGE	124
1	1	1	-	4088040	SF APPL INST 408-8040	123
						122
1	1	1	-	4-21028-0	PIN,SLT SPR(Ø.093x.75)ST GDE PL	121
REF	REF	REF	-	1-21030-1	PIN,DOWEL(Ø.187x.50)LEVER	120
REF	REF	REF	-	1-21030-6	PIN,DOWEL(Ø.187x1.25)HOUSING	119
REF	REF	REF	-	21045-3	RING,RET "C"(Ø.187)FD FING PIN	118
1	1	1	-	21024-5	WASHER, LOCK(#10)ADJ BLOCK	117
REF	REF	REF	-	21024-5	WASHER,LOCK(#10)ADJ PLATE	116
REF	REF	REF	-	21024-5	WASHER,LOCK(#10)FEED GDE ROD	115
2	2	2	-	21024-2	WASHER,LOCK(#4)FRONT STP GUIDE	114
REF	REF	REF	-	5-21028-1	PIN,SLT SPR(Ø.125x.50)ADJ ROD	113
						112
4	4	4	-	21024-4	WASHER,LOCK(#8)STRIPPER	111
REF	REF	REF	-	21899-4	WASHER,FLAT(Ø5/16)SCREW ADJ	110
						109
1	1	1	-	21018-5	NUT,HEX(NO.6)HOLDDOWN	108
REF	REF	REF	-	21068-5	NUT,HEX(6-32)FEED ADJ	107
						106
						105
						104
1	1	1	-	21009-2	SCR,SKT SET(1/4-20x.25 LW)RAM	103
2	2	2	-	21017-2	SCR,DRIVE(#2x.19)ID PLATE	102
REF	REF	REF	-	6-23715-5	SCR,PAN HD(6-32x1.50)FEED ADJ	101
1	1	1	-	461264-1	PLATE, IDENTIFICATION	100
2	2	2	-	5-21006-6	SCR,SET(10-32x.75)DRAG	99
1	1	1	-	22733-8	SCR,BHC(8-32x.38 LW)ANVIL	98
REF	REF	REF	-	2-21002-9	SCR,BHC(10-32x.75)CAP	97
REF	REF	REF	-	2-22733-8	SCR,BHC(1/4-20x.62)HOUSING	96
REF	REF	REF	-	2-21002-7	SCR,BHC(10-32x.50)SG ADJ BLOCK	95
4	4	4	-	2-21002-2	SCR,BHC(8-32x.50)TERM H DWN	94
						93
2	2	2	-	2-21002-2	SCR,BHC(8-32x.50)R STP GDE	92
1	1	1	-	1-21002-7	SCR,BHC(6-32x.38)CAM	91
						90
						89
						88
						87
2	2	2	-	2-21000-9	SCR,SHC(8-32x.75)DEP-HOLD	86
1	1	1	-	2-22603-0	SCR,HEX HD(8-32x.31)FEED FINGER	85
2	2	2	-	1-21000-3	SCR,SHC(4-40x.25)F ST GUIDE	84
1	1	1	-	2-21000-7	SCR,SHC(8-32x.50)STRIPPER	83
REF	REF	REF	-	3-21000-7	SCR,SHC(10-32x.75)FEED ROD GD	82
REF	REF	REF	-	3-21000-6	SCR,SHC(10-32x.62)FD ADJ BLK	81
1	1	1	-	3-21000-4	SCR,SHC(10-32x.38)SG ADJ BL	80
REF	REF	REF	-	3-21000-4	SCR,SHC(10-32x.38)PIVOT BLK	79
-	REF	-	-	455749-1	GUARD, WINDOW	78
REF	-	-	-	679532-1	INSERT, GUARD	77
						76
						75
1	1	1	-	690603-1	SPRING, ASSIST	74
1	1	1	-	23030-1	SCR,SHC(6-32x.25 SL)INS DISC	73
REF	REF	REF	-	458109-1	WASHER, SPECIAL	72
REF	REF	REF	-	690517-1	SPACER	71
-3	-2	-1	U/M		DESCRIPTION	ITEM NO

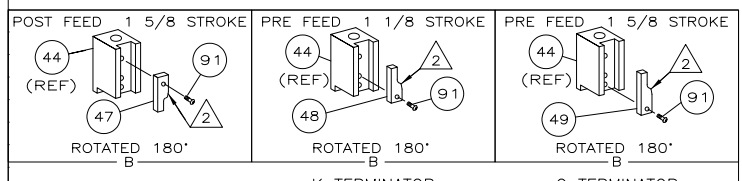
LOC		DIST		REVISIONS			
A	66	P	LR	DESCRIPTION	DATE	OWN	APD
		E		ECR-07-010264	5-2007	MY	TE

-1	LEADMAKER	MECH POST FEED
-2	BENCH MODEL K	MECH PRE FEED
-3	BENCH MODEL G	MECH PRE FEED

REF	REF	REF	REF	QTY	PART NO	DESCRIPTION	ITEM NO
REF	REF	REF	-		22594-8	NUT,HEX(1/2-20)	70
REF	REF	REF	-		240628-1	PLATE, ADJUSTMENT	69
REF	REF	REF	-		240626-1	SHAFT, PIVOT	68
REF	REF	REF	-		240633-1	BUSHING	67
REF	REF	REF	-		455680-1	LEVER, INTERMEDIATE	66
REF	REF	REF	-		240629-1	BLOCK, PIVOT	65
REF	REF	REF	-		240632-2	SCREW, ADJ FEED ROD	64
REF	REF	REF	-		240659-3	PIN, CAM ROLLER	63
REF	REF	REF	-		240658-1	ROLLER, CAM	62
REF	REF	REF	-		454398-2	ROD, FEED	61
REF	REF	REF	-		454178-1	GUIDE, FEED ROD	60
REF	REF	REF	-		454220-1	CAP, RAM	59
REF	REF	REF	-		454485-1	HOUSING	58
							57
1	1	1	-		458537-2	PAWL, FEED	56
REF	REF	REF	-		240624-1	PIN, FEED FINGER	55
REF	REF	REF	-		691499-1	SPRING, FEED FINGER	54
REF	REF	REF	-		690541-1	HOLDER, FEED FINGER	53
REF	REF	REF	-		455679-1	LEVER, TERMINAL FEED ARM	52
1	1	1	-		811242-2	BUMPER, HOLDDOWN	51
1	1	1	-		690753-1	SPACER, TONKER	50
1	-	-	-		690602-6	CAM, PRE-FEED 1 5/8 ST	49
-	1	-	-		690602-5	CAM, PRE-FEED 1 1/8 ST	48
-	-	1	-		690501-4	CAM, POST-FEED 1 5/8 ST	47
1	1	1	-		459456-1	APPLICATOR, BASIC (SUBASSY)	46
1	1	1	-		690191-1	PLUG, NYLON	45
1	1	1	-		455673-1	RAM	44
1	1	1	-		690125-1	WASHER, LAMINATED	43
1	1	1	-		690124-1	WASHER, RAM	42
1	1	1	-		7-21002-9	BOLT, CRIMPER(5/16x1.00)	41
1	1	1	-		23241-6	BALL, STEEL	40
1	1	1	-		690170-1	SPRING, COMPRESSION	39
1	1	1	-		690142-1	DISC, INSULATION	38
1	1	1	-		354777-1	WIRE DISC, PLASTIC	37
1	1	1	-		22480-5	WASHER, SPRING	36
1	1	1	-		690212-1	POST, RAM	35
1	1	1	-		690786-6	SUPPORT, TERMINAL	34
REF	REF	REF	-		455675-1	PLATE, BASE	33
1	1	1	-		690432-3	SCREW, ADJUSTMENT	32
							31
REF	REF	REF	-		455689-1	BLOCK, STRIP GUIDE ADJ	30
1	1	1	-		455671-1	PLATE, STRIP GUIDE	29
1	1	1	-		2-455888-0	SPACER, FRONT SHEAR DEP	28
2	2	2	-		1-22284-0	SPRING, DRAG	27
1	1	1	-		690546-1	LEVER, DRAG RELEASE	26
1	1	1	-		240792-1	DRAG, TERMINAL	25
1	1	1	-		6-690504-0	GUIDE, STRIP (REAR)	24
1	1	1	-		690438-1	GUIDE, STRIP (FRONT)	23
-	-	1	-		690472-2	STRIPPER	22
REF	REF	REF	-		4-22284-9	SPRING, FEED RETURN	21
							20
1	1	-	-		691353-1	STRIPPER	19
							18
							17
1	1	1	-		318563-1	GUARD, CHIP, FRONT	16
							15
							14
							13
1	1	1	-		3-22280-3	SPRING, SHEAR	12
1	1	1	-		690461-1	STOP, SHEAR	11
1	1	1	-		690459-1	HOLDER, SHEAR (FRONT)	10
1	1	1	-		1-454276-9	SHEAR, FLOAT (FRONT)	9
1	1	1	-		2-662185-7	ANVIL	8
1	1	1	-		6-240641-5	SPACER, DEPRESSOR (REAR)	7
							6
1	1	1	-		1-455889-4	DEPRESSOR, SHEAR (FRONT)	5
1	1	1	-		238011-7	SPACER, BLOCK CRIMPER	4
1	1	1	-		3-683453-0	CRIMPER, INSULATION	3
1	1	1	-		455888-1	SPACER, CRIMPER	2
1	1	1	-		1-456404-8	CRIMPER, WIRE	1



- 1 RECOMMENDED SPARE PARTS.
- 2 GREASE LIGHTLY.
- 3 GUARD MUST BE IN PLACE WHEN OPERATING APPLICATOR IN A BENCH MACHINE.
- 4 LUBRICATE DAILY USING NO. 20 MACHINE OIL.
- 5. ITEMS WITH QTY OF REF SPECIFIED (EXCEPT ITEMS 78 AND 79) ARE USED ON ITEM 46.
- 6 SEE 1456216

